

TIPS AND TRICKS

OCTOBER 2017

CUSTOMIZATION OF GRAPHICAL INTERFACE

PART 1. GRAPHICAL CHANGES IN THE WINDOW

You don't like the way information is organized in the windows and maybe there is something you would like to change, enlarge, and make it smaller, or maybe shift?

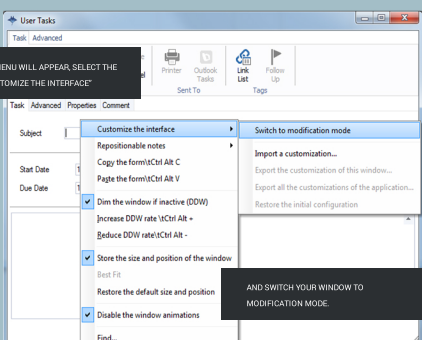
In Mantaray you have that possibility to arrange your windows and give them the look you want. You just need to use our context menu to manage the graphical interface.

The graphical context menu contains the number of functions that can help organize the fields and buttons in the windows.

1

TO ACCESS THE MENU, FIRST OPEN THE WINDOW YOU NEED TO PROVIDE THE CHANGES FOR, INSIDE OF THE WINDOW RIGHT-CLICK ON YOUR MOUSE.

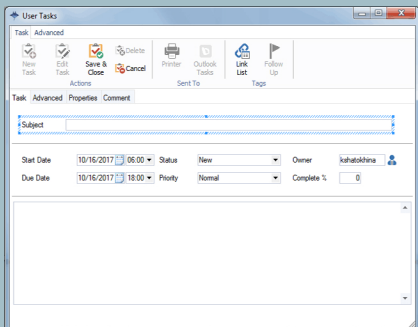
THE CONTEXT MENU WILL APPEAR, SELECT THE FUNCTION "CUSTOMIZE THE INTERFACE"



AND SWITCH YOUR WINDOW TO MODIFICATION MODE.

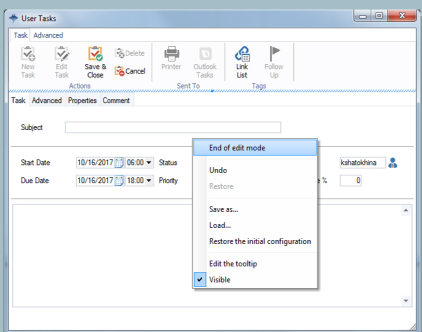
IN THE MODIFICATION MODE THE WINDOW BECOMES ABSOLUTELY ADJUSTABLE AND FLEXIBLE TO YOUR NEEDS. SELECT THE NECESSARY OBJECTS BY CLICKING ON IT AND PERFORM THE NECESSARY CHANGES.

2



3

WHEN YOU ARE DONE WITH THE CHANGES, RIGHT-CLICK AGAIN AND SELECT "END OF EDIT MODE", IF YOU WANT TO FINISH. YOU CAN ALSO UNDO THE CHANGES, OR RESTORE THE INITIAL LOOK OF THE WINDOW.



WATCH OUR TUTORIAL ON YOUTUBE



LINKEDIN



FACEBOOK



YOUTUBE



TWITTER